

Plug-In Units Circuit Breaker Type

BD Circuit Breaker Plug-In Units are available in a variety of sizes up to 800A, 600V. To offer you the maximum flexibility in trip ratings required. Our standard BD plug-in units are available as enclosure only and specific Siemens circuit breakers are available at your local Siemens distributor.

In addition to our standard line of plug-in units, Siemens also offers these following custom design plug-in units for your custom applications. Inquire with your local Siemens distributor when ordering these custom plug-in units.

Capacitor Plug-in Units

Capacitor plug-in units range in size from 5 to 15KVA, 240VAC or 480VAC, 60Hz. These plug-in units offer a convenient means for reducing inductive heating and improving the power factor on plug-in busway systems.

Field Addable Ground Kits For BD Bus Plugs ①

Ampere Rating	Catalog Number
Fusible	
30-60	W6323
100	W63232
200	W63233
400	W63234
600	W63234
Circuit Breaker	
BEC	W63553
BFC	W63554
BJC	W63238
BLC	W63238
BMC	W63552

Fuse Adaptor Kits – BOS

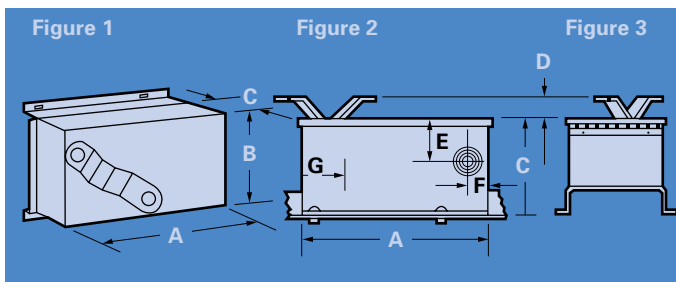
Amperage	Class "J"	Class "T"	Class "R"
240V AC/250V DC			
30	②	②	W56626
60	②	②	W56628
100	W49827	TFAK32	W55365
200	W49819	TFAK42	W55366
400	W49814	TFAK52	W55367
600	W49813	TFAK62	W55368
600V			
30	W49832	②	W56627
60	W49830	②	W56629
100	W49828	TFAK35	W55365
200	W49819	TFAK45	W55366
400	W49816	TFAK55	W55367
600	W49815	TFAK65	W55368

① These are for use on busway with internal ground bus manufactured after March, 1986. For ground kits prior to this date, consult local sales office.
 ② Not required



Lighting Contactor Plug-in Units

Lighting Contactor plug-in units are rated at 10KVA, furnish single-phase current at reduced voltage (240VAC or 120VAC) for lighting and small motor loads. The AC magnetic contactors are available in two ampere ratings (22A and 45A).



Pipe Spacers

The flanges on plug-in busway plugs are designed to fit 4 1/16" wide busway sections. When plugs are to be attached to larger busway sections, pipe spacers must be used and specified when ordering plugs.

Ordering Information

Frame Size	Ampere Rating	3 Phase, 3Wire Enclosure Only Catalog Number	3 Phase, 4 Wire Enclosure Only Catalog Number	Dimensions (Shown In Inches)							Conduit Size	Lug Size
				A	B	C	D	E	F	G		
Circuit Breaker Plugs-Floor Operable (See Figures 1, 2 and 3)												
E2-A, E4-A, E6-A	100	BEC3100	BEC4100	12 ³ / ₈	7 ⁵ / ₈	8 ⁷ / ₈	1 ¹ / ₁₆	3 ¹ / ₂	2 ¹ / ₄	2 ¹⁵ / ₁₆	1/2, 3/4, 1, 1 ¹ / ₄ , 1 ¹ / ₂ , 2	①
F6, FJ6	250	BFC3250	BEC4250	22	10	8 ⁹ / ₁₆	1 ³ / ₄	3 ¹ / ₈	2 ¹⁵ / ₁₆	3 ⁵ / ₈	3/4, 1, 1 ¹ / ₄ , 1 ¹ / ₂ , 2, 2 ¹ / ₂	②
JL6, JJ6, JD2	400	BJC3400	BJC4400	24 ¹ / ₂	11 ³ / ₈	9 ⁹ / ₁₆	1 ¹ / ₁₆	3 ¹ / ₂	3 ¹ / ₄	4 ¹ / ₈	No K.O.'s Provided	③
LL6, LJ6	600	BLC3600	BLC4600	24 ¹ / ₂	11 ³ / ₈	9 ⁹ / ₁₆	1 ¹ / ₁₆	3 ¹ / ₂	3 ¹ / ₄	4 ¹ / ₈	No K.O.'s Provided	④
KM	800	BMC3800	BMC4800	33 ³ / ₁₆	14 ¹ / ₄	10 ¹³ / ₁₆	1 ⁷ / ₈	5 ³ / ₁₆	3 ³ / ₄	3 ⁵ / ₈	No K.O.'s Provided	④

① 10-30A (1) #14-#8 AWG Cu/Al
 (1) #12-#8 AWG Cu/Al
 35-100A (1) #8-1/0 AWG Cu/Al
 (1) #6-1/0 AWG Cu/Al

② 225A (1) #4 AWG-350 MCM Cu/Al
 (1) #6 AWG-350 MCM Cu Only

③ (JL6) 125-225A (1) #4 AWG-300 MCM Cu/Al
 (1) #2 AWG-300 MCM Cu/Al
 250-350A (1) 250-500 MCM Cu/Al
 (1) 350-500 MCM Cu/Al
 400A (2) 3/0 AWG-250 MCM Cu/Al
 4/0 AWG-250 MCM Cu/Al
 (JJ6, JD2) 250-350A (1) 250-500 MCM Cu/Al
 (1) 350-500 MCM Cu/Al
 400A (2) 3/0 AWG-250 MCM Cu/Al
 (2) 4/0 AWG-250 MCM Cu/Al

④ 250-600A (2) #1 AWG-500 MCM Cu/Al
 750-800A (3) 300-350 MCM Cu/Al
 (3) 400 MCM Cu/Al

Plug-In Units Fusible Switch Type

BD Fusible Switch Plug-in Units are available in a variety of sizes up to 600A, 600V. This plug-in unit line utilizes the Siemens Vacu-Break line of fusible switches, which are quick-make/quick-break designed switches.

Fuses are not included with the BD Fusible Switch Plug-in Units and must be purchased separately. Inquire about your fuse needs with your local Siemens distributor.



Ordering Information ①

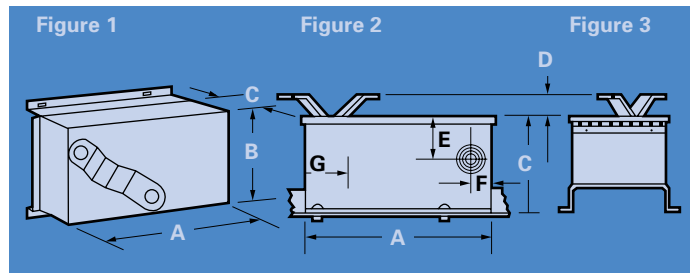
Volts	Amp Rating	Horsepower Ratings, AC		BD Catalog #
		Standard (NEC)	Maximum (Time Delay)	
3 Phase, 3 Wire				
240AC	30	3	7½	BOS14321
250DC	60	7½	15	BOS14322
	100	15	30	BOS14323
	200	25	60	BOS14324
	400	50	125	BOS14325
600AC	600②	75	200	BOS14326
	30	7½	20	BOS14351
	60	15	50	BOS14352
	100	30	75	BOS14353
	200	50	150	BOS14354
	400	125	350	BOS14355
	600②	200	500	BOS14356

3 Phase, 4 Wire

240AC	30	3	10	BOS16421
250DC	60	7½	20	BOS16422
	100	15	30	BOS16423
	200	25	60	BOS16424
	400	50	125	BOS16425
600AC	600②	75	200	BOS16426
	30	5②	15①	BOS16451
	60	15②	30①	BOS16452
	100	25②	60①	BOS16453
	200	50②	150①	BOS16454
	400	125②	350①	BOS16455
	600②	200②	500①	BOS16456

① Bus plugs 400A and smaller require one plug-in openings
600A and larger require two plug-in openings.

② 480 volt rating.
For J and R fuse clips see page 17.



Pipe Spacers

The flanges on plug-in busway plugs are designed to fit 4 1/16" wide busway sections. When plugs are to be attached to larger busway sections, pipe spacers must be used and specified when ordering plugs.

Fusible Vacu-Break Switch Plugs – Floor Operable (See Figures 1, 2 and 3)

Ampere Rating	Dimensions (Shown In Inches)							Conduit Size (K.O.'s)	Lug Size
	A	B	C	D	E	F	G		
30	12	7⅞	9	1¾	4⅞	1⅞	3⅞	½, ¾, 1, 1¼	①
60	12	7⅞	9	1¾	4⅞	1⅞	3⅞	½, ¾, 1, 1¼	②
100	15	7⅞	9	1¾	4⅞	1⅞	3⅞	½, ¾, 1, 1¼	③
200	19¼	9¾	9¼	9¼	4⅞	2⅞	4	1, 1¼, 1½, 2, 2½	④
400	30⅞	14½	12⅞	2	—	—	9⅞	No K.O.'s Provided	⑤
600	30⅞	14½	12⅞	2	—	—	9⅞	No K.O.'s Provided	⑥

① (1) #14-4 AWG Cu/Al
② (1) #14-2 AWG Cu/Al

③ (1) #14-1/0 AWG Cu/Al
④ (1) #6 AWG-250 NCM Cu/Al

⑤ (1) #4 AWG-500 MCM Cu/Al
(1) #6 AWG-250 MCM Cu/Al

⑥ (2) AWG-500 MCM Cu/Al